

MONTHLY MEMBERSHIP PROGRESS REPORT

LOCATION WISCONSIN

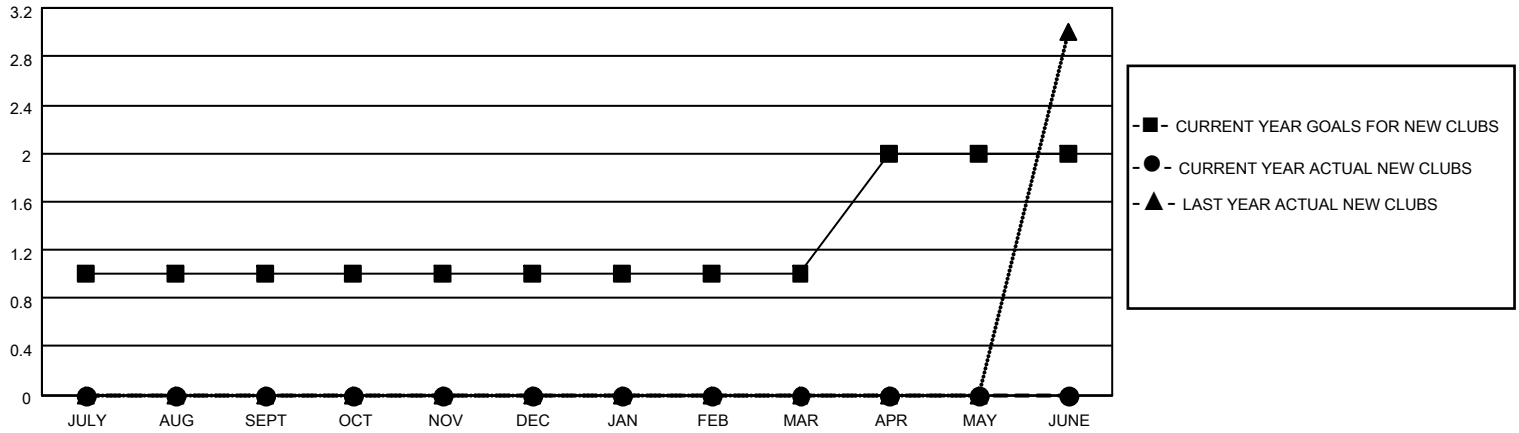
District 27 D1

Results as of: 9/30/2021

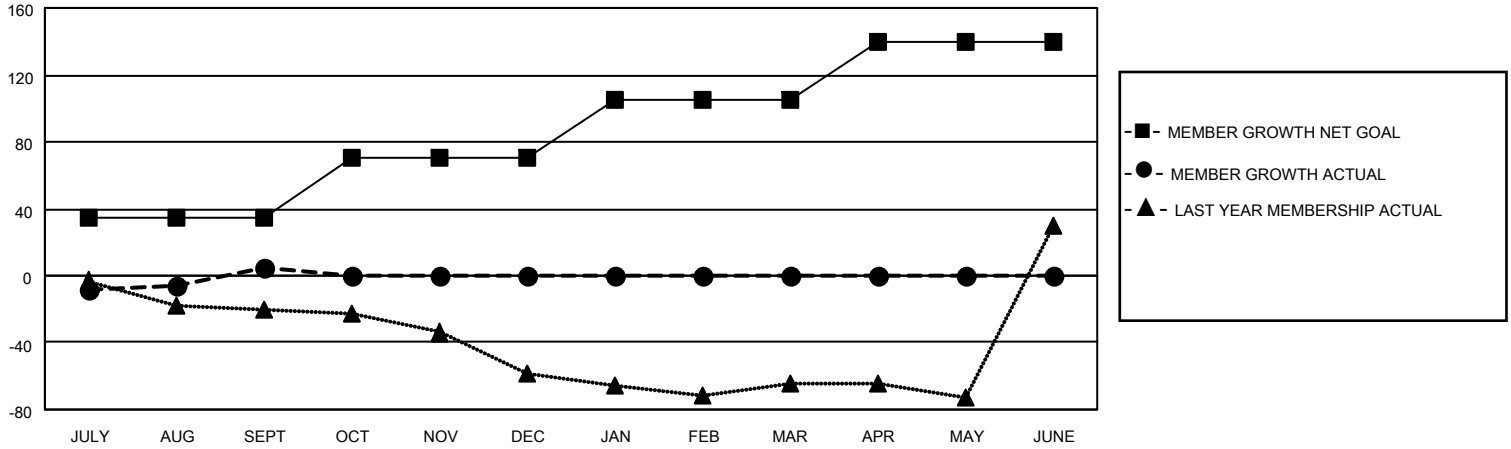
Clubs			
RESULTS FOR 2021-2022			
QUARTER	NEW CLUB GOAL	NEW CLUBS	DROPPED CLUBS
JULY/AUG/SEPT	1	0	0
OCT/NOV/DEC	0	0	0
JAN/FEB/MAR	0	0	0
APR/MAY/JUNE	1	0	0

Members			
RESULTS FOR 2021-2022			
QUARTER	MEMBER GROWTH NET GOAL	MEMBER GROWTH ACTUAL	DROPPED MEMBERS ACTUAL (including transfers)
JULY/AUG/SEPT	35	46	38
OCT/NOV/DEC	35	0	0
JAN/FEB/MAR	35	0	0
APR/MAY/JUNE	35	0	0

GOALS AND ACTUAL NEW CLUBS CUMULATIVE



GOALS AND ACTUAL MEMBERS CUMULATIVE



DROPPED CLUBS: 0

20 CLUBS OF 61 ADDED 1 OR MORE NEW MEMBERS

GENDER DISTRIBUTION

MALE	1,473 (68.42%)
FEMALE	680 (31.58%)
NON BINARY	0 (0.00%)
PREFER NOT TO ANSWER	0 (0.00%)

DROPPED MEMBERS

[CLICK HERE FOR CUMULATIVE MEMBERSHIP DATA](#)

DECEASED	6
CLUB CANCELLED	0
OTHER	32
TOTAL	38

TOTAL FAMILY UNIT MEMBERS 478

FAMILY MEMBERS PAYING HALF DUES 241